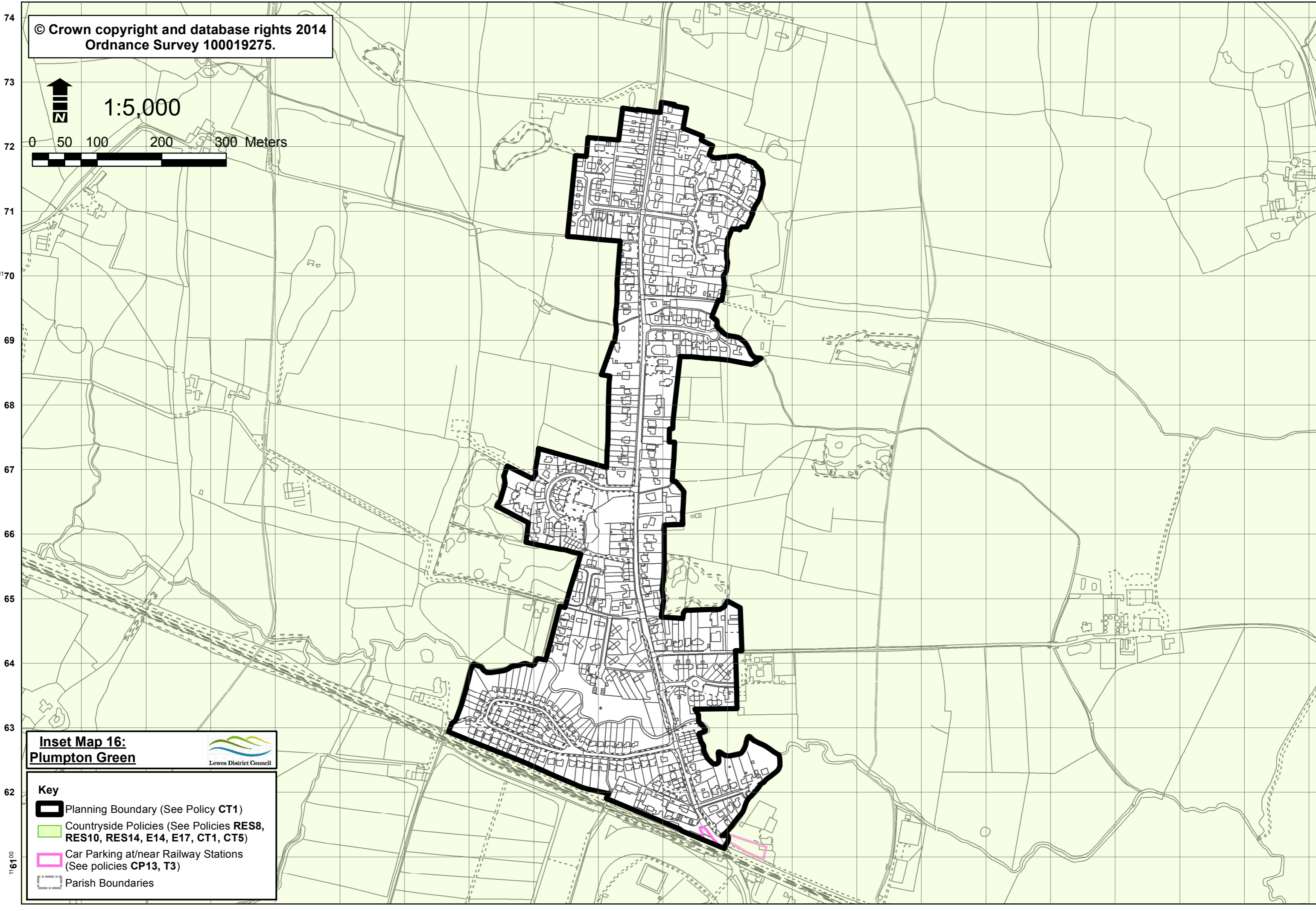
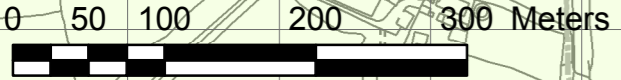


© Crown copyright and database rights 2014
Ordnance Survey 100019275.



1:5,000



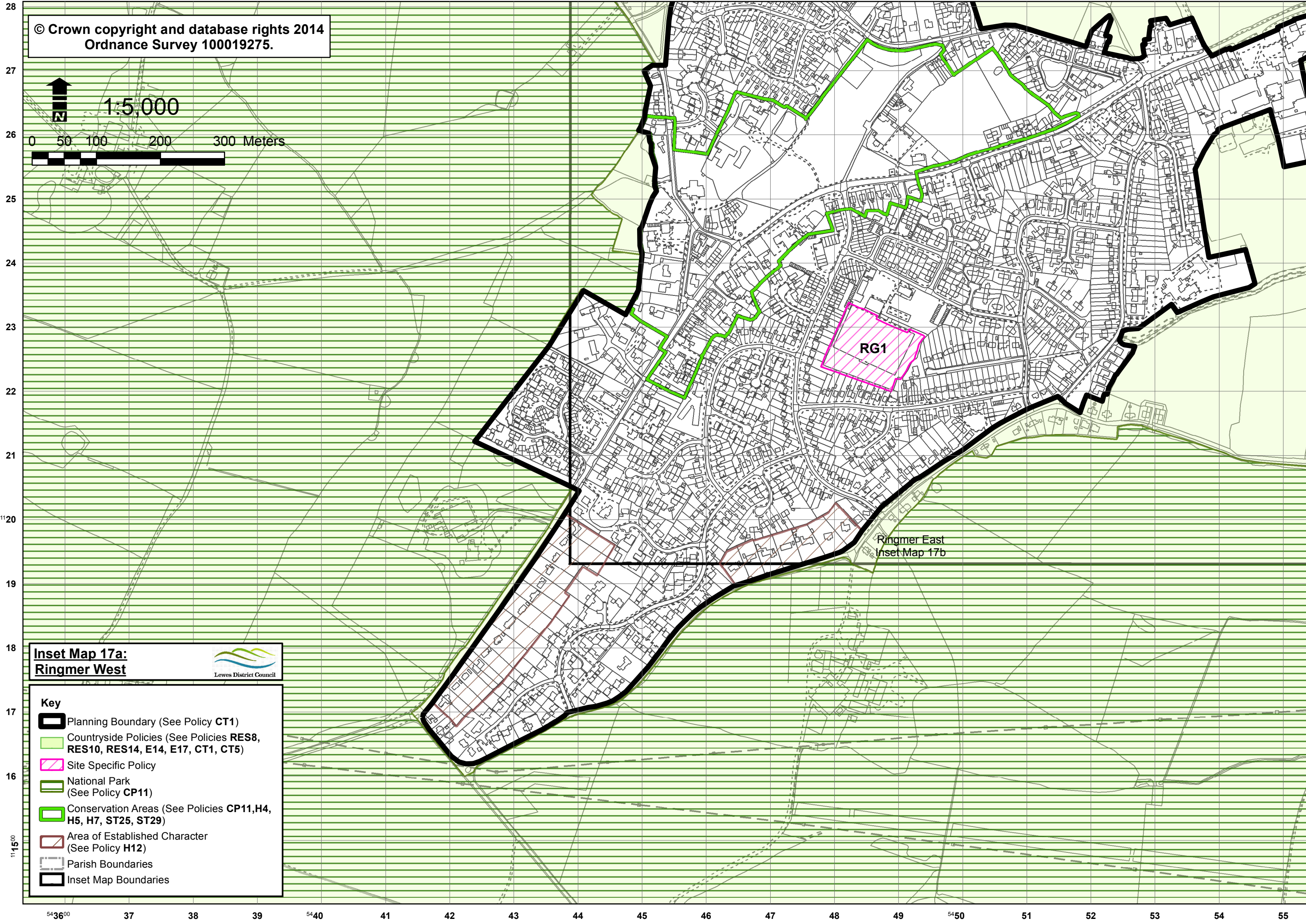
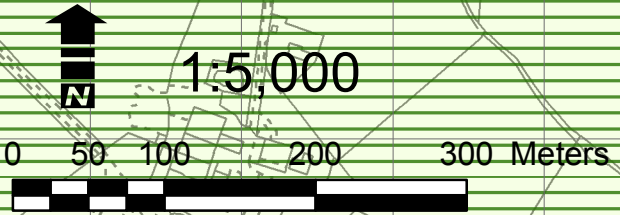
**Inset Map 16:
Plumpton Green**



- Key**
- Planning Boundary (See Policy CT1)
 - Countryside Policies (See Policies RES8, RES10, RES14, E14, E17, CT1, CT5)
 - Car Parking at/near Railway Stations (See policies CP13, T3)
 - Parish Boundaries

535500 56 57 58 59 5360 61 62 63 64 65 66 67 68 69 5370 71 72 73 74

© Crown copyright and database rights 2014
Ordnance Survey 100019275.



**Inset Map 17a:
Ringmer West**

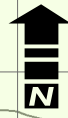


- Key**
- Planning Boundary (See Policy CT1)
 - Countryside Policies (See Policies RES8, RES10, RES14, E14, E17, CT1, CT5)
 - Site Specific Policy
 - National Park (See Policy CP11)
 - Conservation Areas (See Policies CP11, H4, H5, H7, ST25, ST29)
 - Area of Established Character (See Policy H12)
 - Parish Boundaries
 - Inset Map Boundaries

Ringmer East
Inset Map 17b

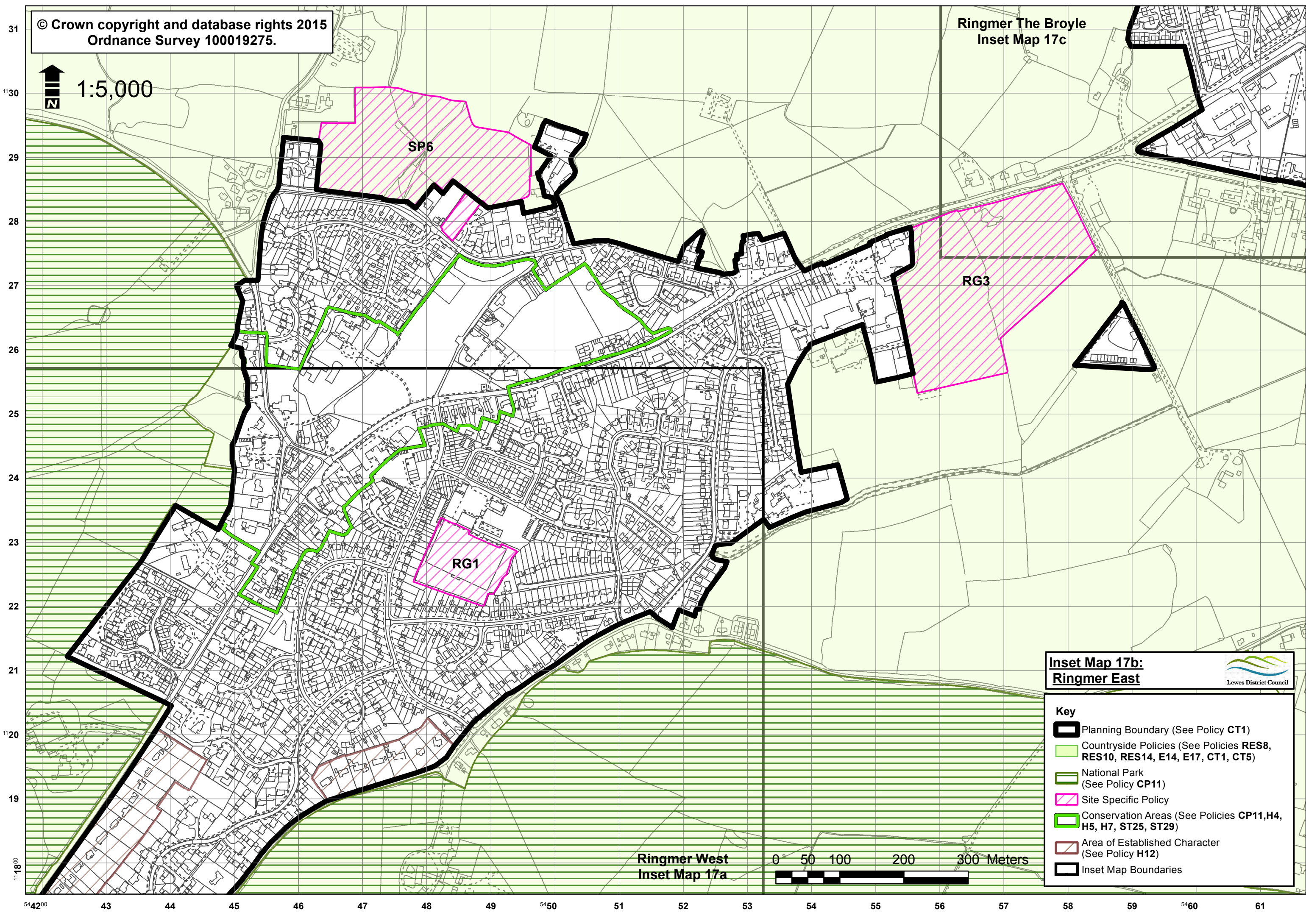
54°36'00" 37 38 39 54°40' 41 42 43 44 45 46 47 48 49 54°50' 51 52 53 54 55

© Crown copyright and database rights 2015
Ordnance Survey 100019275.



1:5,000

Ringmer The Broyle
Inset Map 17c



Inset Map 17b:
Ringmer East



- Key**
- Planning Boundary (See Policy CT1)
 - Countryside Policies (See Policies RES8, RES10, RES14, E14, E17, CT1, CT5)
 - National Park (See Policy CP11)
 - Site Specific Policy
 - Conservation Areas (See Policies CP11, H4, H5, H7, ST25, ST29)
 - Area of Established Character (See Policy H12)
 - Inset Map Boundaries

Ringmer West
Inset Map 17a



54200 43 44 45 46 47 48 49 50 51 52 53 54 55 56 57 58 59 60 61

11800

19

20

21

22

23

24

25

26

27

28

29

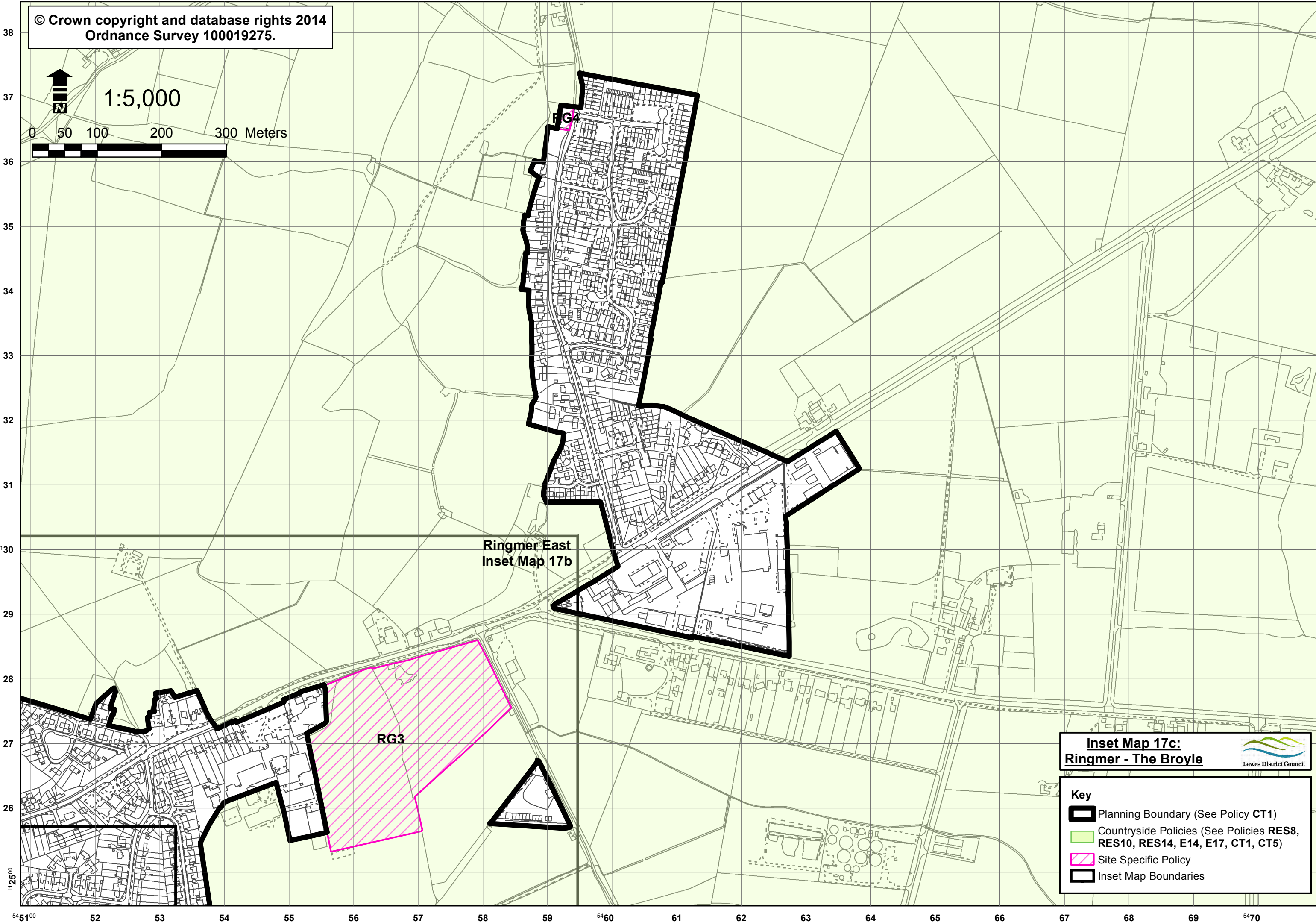
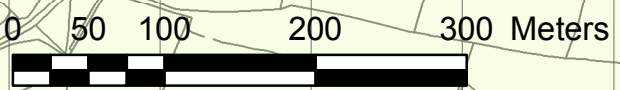
30

31

© Crown copyright and database rights 2014
Ordnance Survey 100019275.

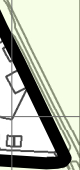


1:5,000



Ringmer East
Inset Map 17b

RG3



Inset Map 17c:
Ringmer - The Broyle



- Key**
- Planning Boundary (See Policy CT1)
 - Countryside Policies (See Policies RES8, RES10, RES14, E14, E17, CT1, CT5)
 - Site Specific Policy
 - Inset Map Boundaries

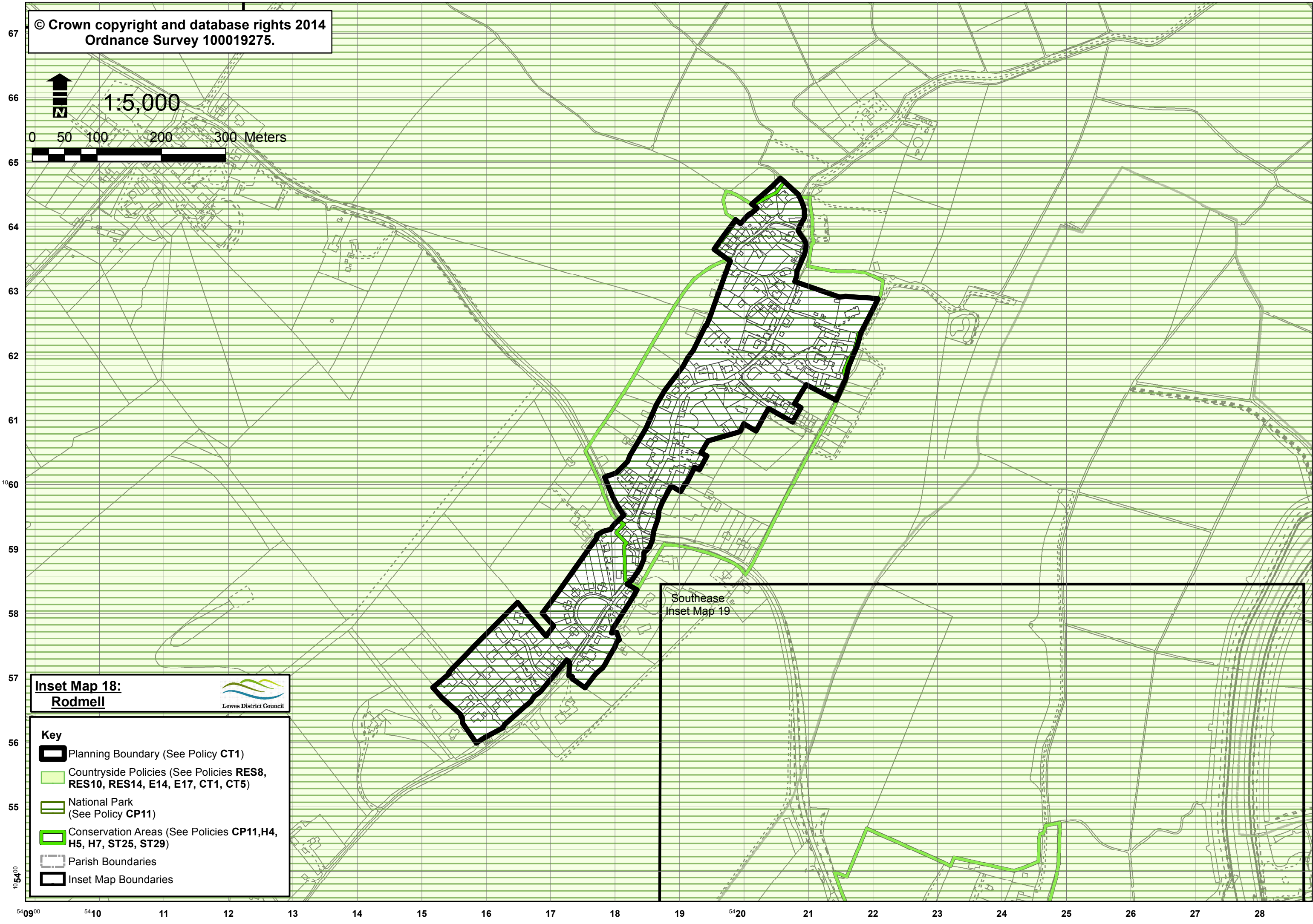
54 51⁰⁰ 52 53 54 55 56 57 58 59 54 60 61 62 63 64 65 66 67 68 69 54 70

11 25⁰⁰

© Crown copyright and database rights 2014
Ordnance Survey 100019275.



1:5,000



Inset Map 18:
Rodmell



- Key**
- Planning Boundary (See Policy CT1)
 - Countryside Policies (See Policies RES8, RES10, RES14, E14, E17, CT1, CT5)
 - National Park (See Policy CP11)
 - Conservation Areas (See Policies CP11, H4, H5, H7, ST25, ST29)
 - Parish Boundaries
 - Inset Map Boundaries

Southease
Inset Map 19


540900 5410 11 12 13 14 15 16 17 18 19 5420 21 22 23 24 25 26 27 28

105400

56
55
54







Rodmell
Inset Map 18

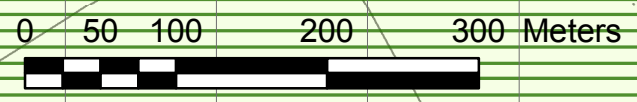
**Inset Map 19:
Southeast**



Lewes District Council

Key

-  Countryside Policies (See Policies **RES8**, **RES10**, **RES14**, **E14**, **E17**, **CT1**, **CT5**)
-  National Park (See Policy **CP11**)
-  Conservation Areas (See Policies **CP11**, **H4**, **H5**, **H7**, **ST25**, **ST29**)
-  The River Ouse Policy (See Policy **RE7**)
-  Parish Boundaries
-  Inset Map Boundaries



© Crown copyright and database rights 2014
Ordnance Survey 100019275.



1:5,000

0 50 100 200 300 Meters







59
58
57
56
55
54
53
52
51
1150
49
48
47
46
1146⁰⁰

Inset Map 20:
Streat



Key

-  Countryside Policies (See Policies RES8, RES10, RES14, E14, E17, CT1, CT5)
-  National Park (See Policy CP11)
-  Conservation Areas (See Policies CP11, H4, H5, H7, ST25, ST29)
-  Parish Boundaries

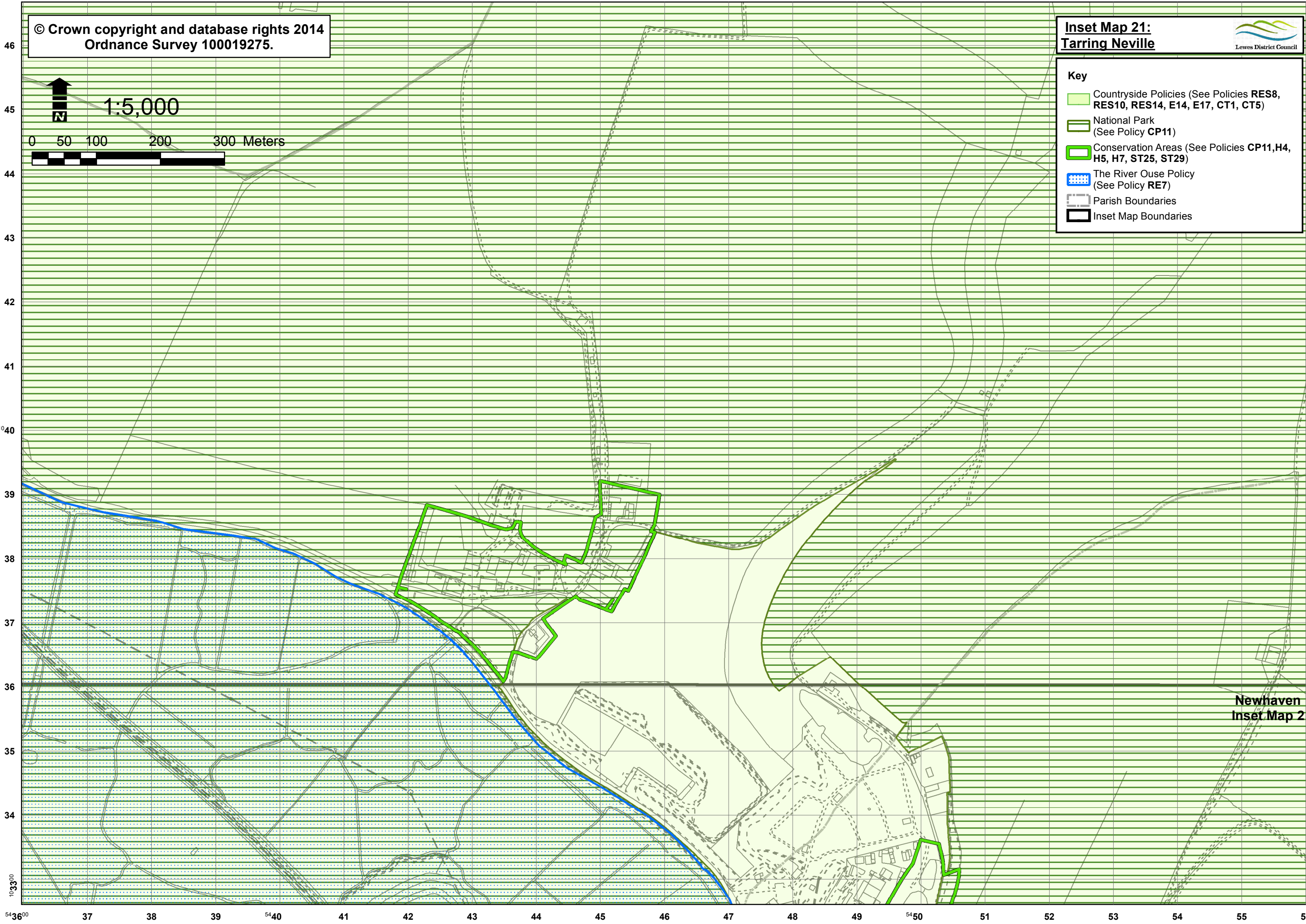
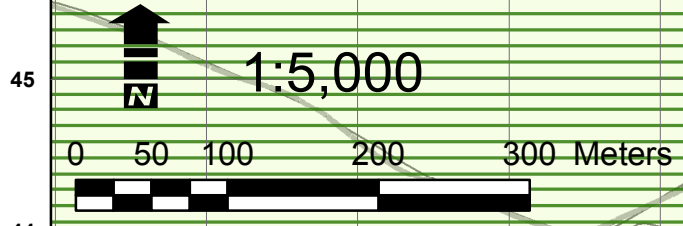
5342⁰⁰ 43 44 45 46 47 48 49 5350 51 52 53 54 55 56 57 58 59 5360 61

© Crown copyright and database rights 2014
Ordnance Survey 100019275.

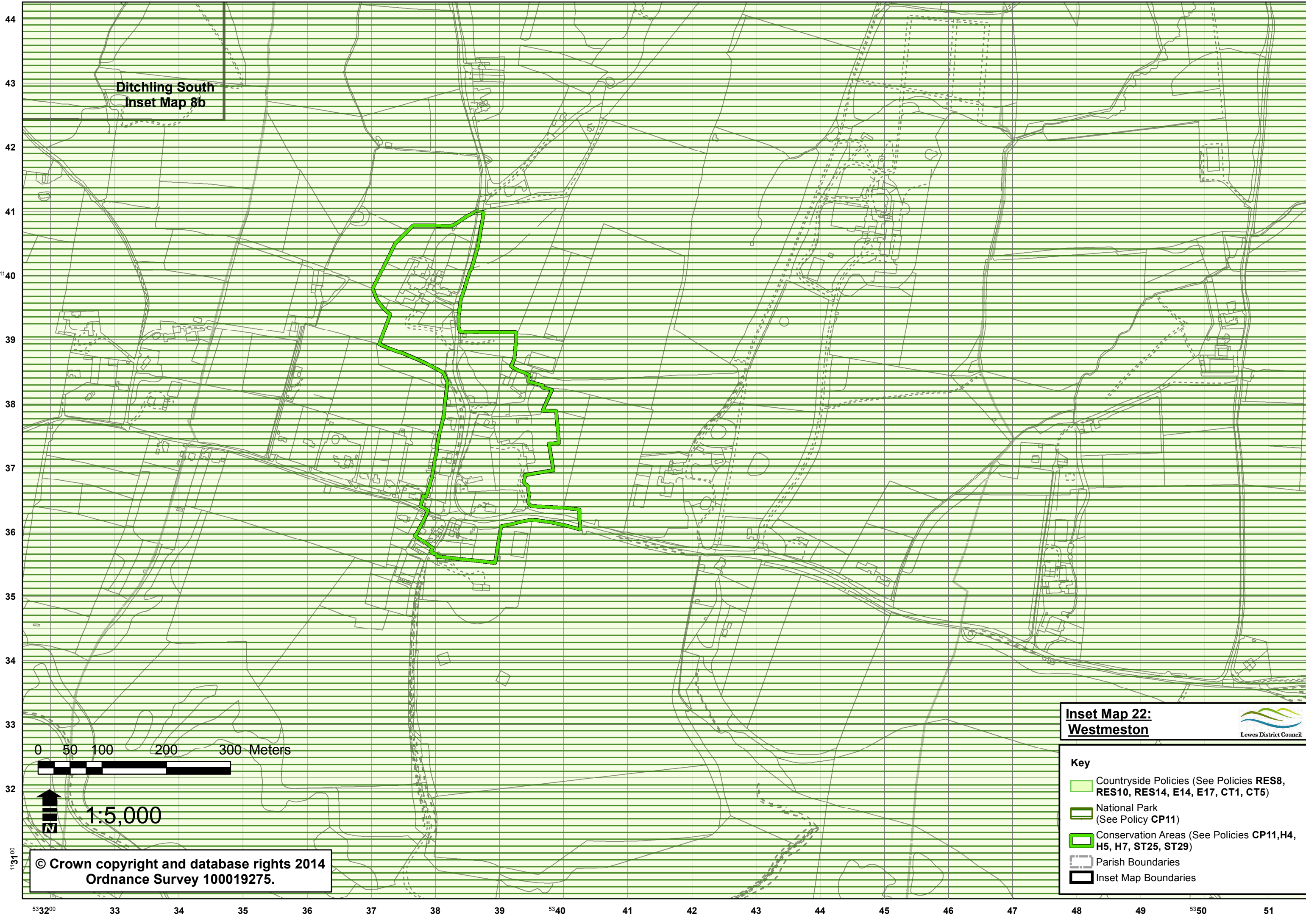


**Inset Map 21:
Tarring Neville**

- Key**
- Countryside Policies (See Policies RES8, RES10, RES14, E14, E17, CT1, CT5)
 - National Park (See Policy CP11)
 - Conservation Areas (See Policies CP11, H4, H5, H7, ST25, ST29)
 - The River Ouse Policy (See Policy RE7)
 - Parish Boundaries
 - Inset Map Boundaries








Newhaven
Inset Map 2



Ditchling South
Inset Map 8b

**Inset Map 22:
Westmeston**



- Key**
-  Countryside Policies (See Policies RES8, RES10, RES14, E14, E17, CT1, CT5)
 -  National Park (See Policy CP11)
 -  Conservation Areas (See Policies CP11, H4, H5, H7, ST25, ST29)
 -  Parish Boundaries
 -  Inset Map Boundaries

0 50 100 200 300 Meters

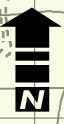


1:5,000

© Crown copyright and database rights 2014
Ordnance Survey 100019275.

53200 33 34 35 36 37 38 39 5340 41 42 43 44 45 46 47 48 49 5350 51


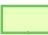



1:5,000



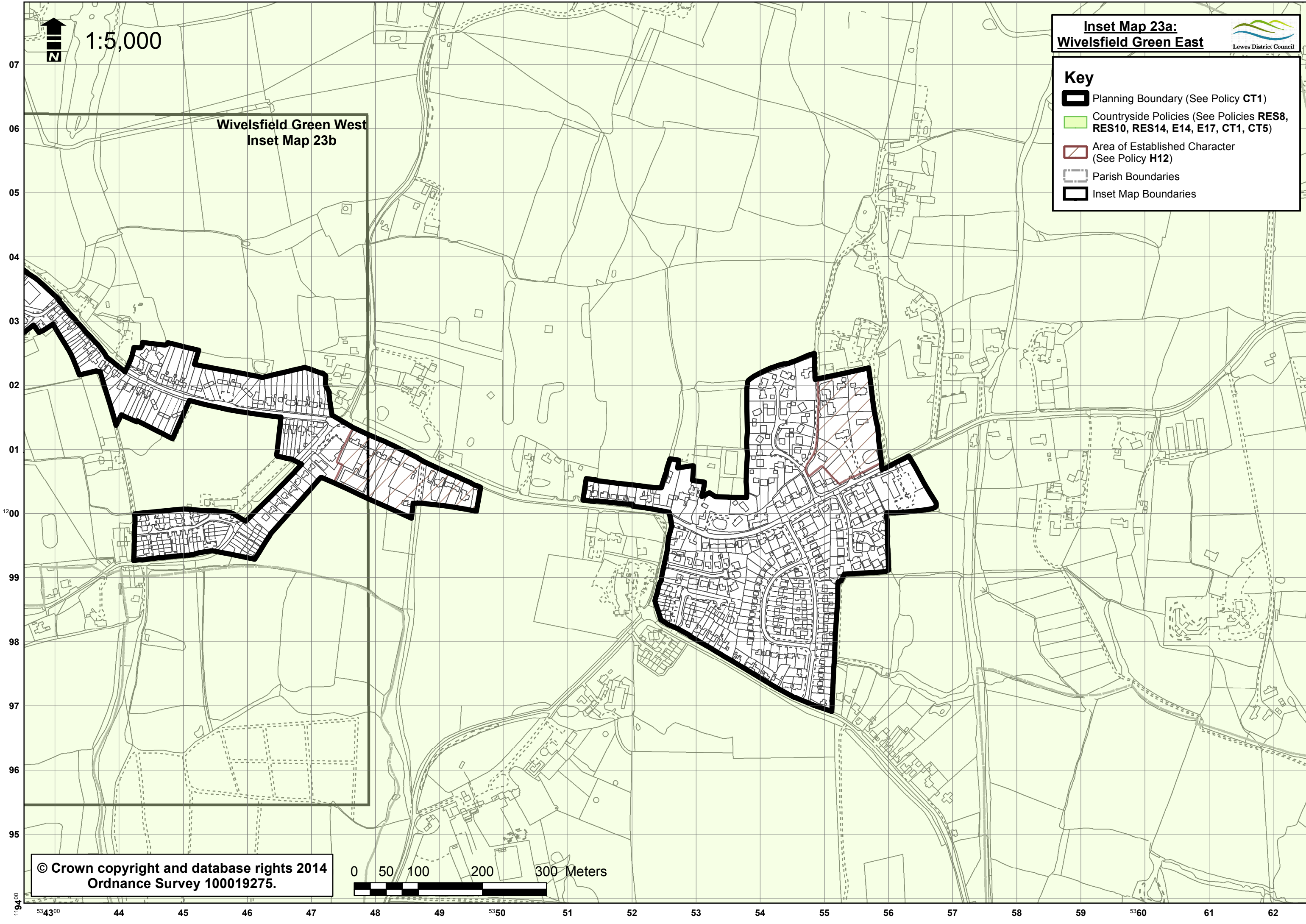
**Inset Map 23a:
Wivelsfield Green East**



Key

-  Planning Boundary (See Policy CT1)
-  Countryside Policies (See Policies RES8, RES10, RES14, E14, E17, CT1, CT5)
-  Area of Established Character (See Policy H12)
-  Parish Boundaries
-  Inset Map Boundaries

Wivelsfield Green West
Inset Map 23b



© Crown copyright and database rights 2014
Ordnance Survey 100019275.



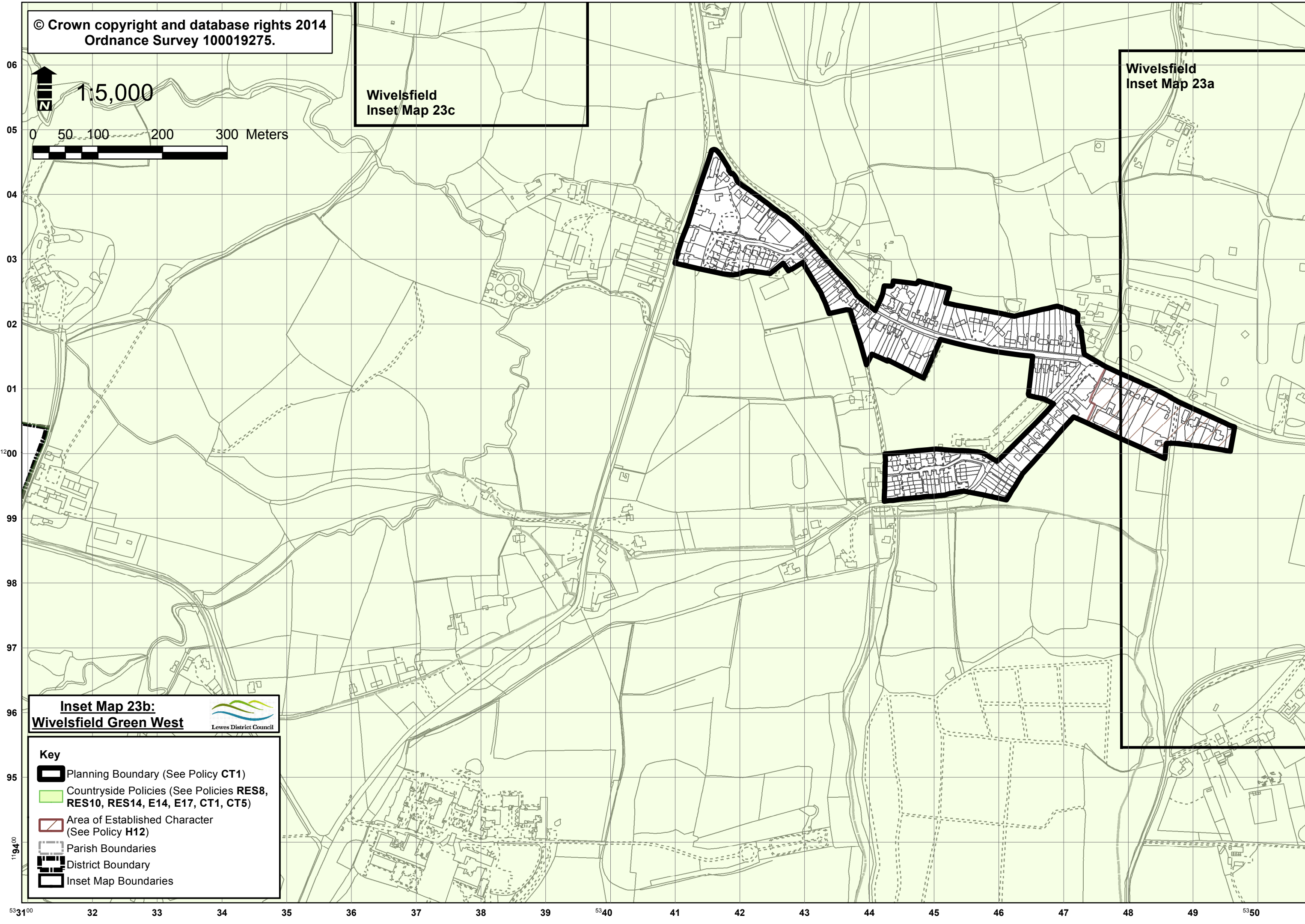
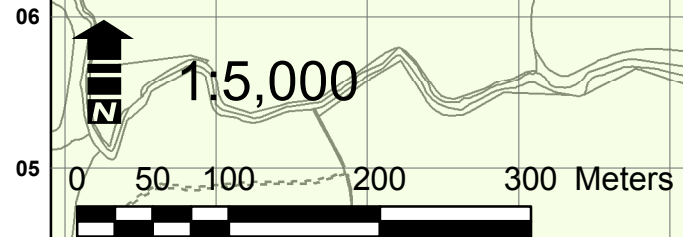
53 43⁰⁰ 44 45 46 47 48 49 50 51 52 53 54 55 56 57 58 59 60 61 62

1194⁰⁰

© Crown copyright and database rights 2014
Ordnance Survey 100019275.

Wivelsfield
Inset/Map 23c

Wivelsfield
Inset Map 23a



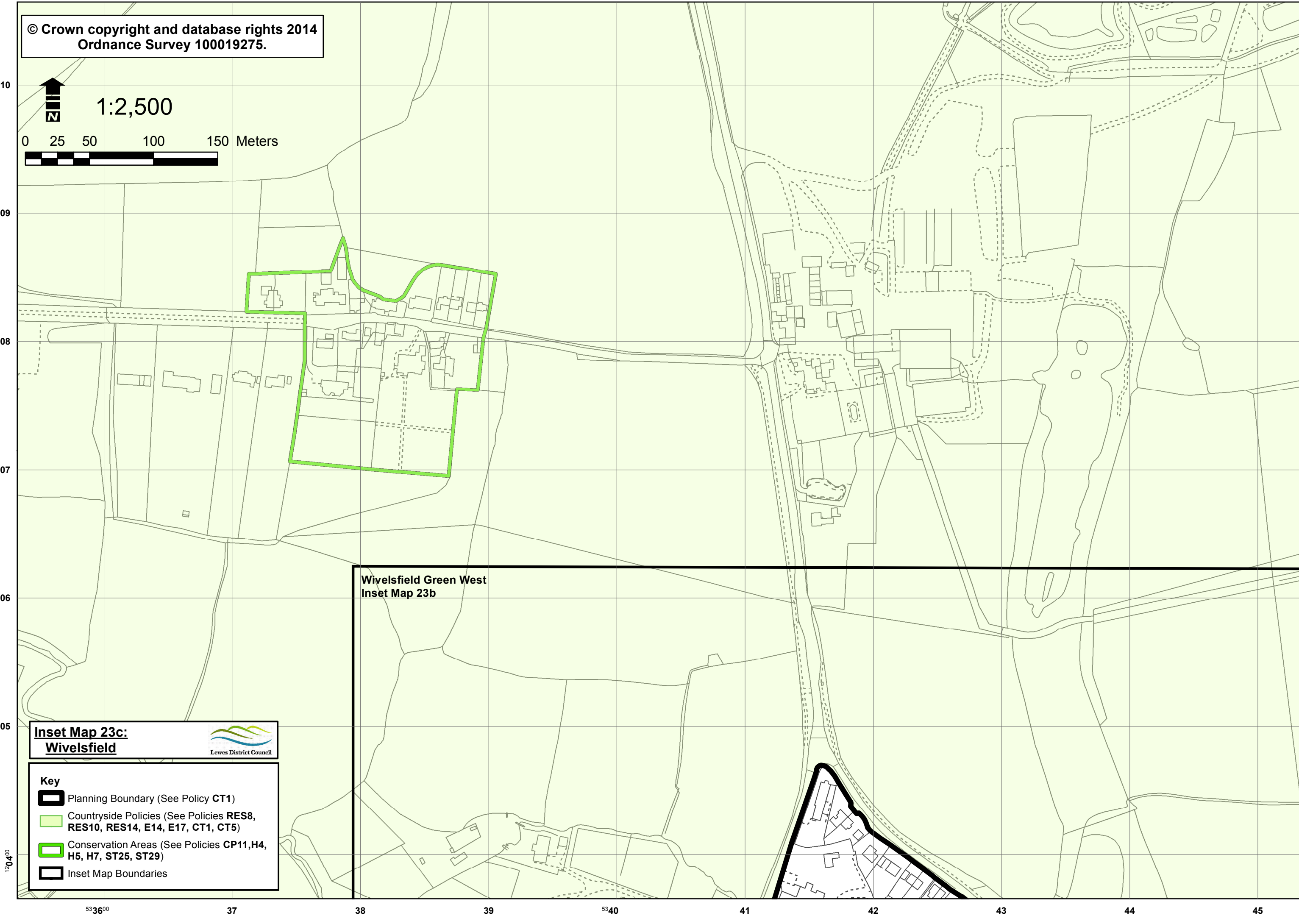
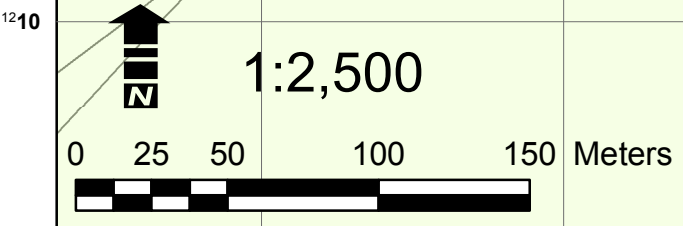
Inset Map 23b:
Wivelsfield Green West



- Key**
- Planning Boundary (See Policy CT1)
 - Countryside Policies (See Policies RES8, RES10, RES14, E14, E17, CT1, CT5)
 - Area of Established Character (See Policy H12)
 - Parish Boundaries
 - District Boundary
 - Inset Map Boundaries

53100 32 33 34 35 36 37 38 39 5340 41 42 43 44 45 46 47 48 49 530

© Crown copyright and database rights 2014
Ordnance Survey 100019275.



Wivelsfield Green West
Inset Map 23b

Inset Map 23c:
Wivelsfield



- Key**
- Planning Boundary (See Policy CT1)
 - Countryside Policies (See Policies RES8, RES10, RES14, E14, E17, CT1, CT5)
 - Conservation Areas (See Policies CP11, H4, H5, H7, ST25, ST29)
 - Inset Map Boundaries

5336⁰⁰ 37 38 39 5340 41 42 43 44 45

1204⁰⁰

**Inset Map 23d:
Theobolds**



Key

- Planning Boundary (See Policy CT1)
- Countryside Policies (See Policies RES8, RES10, RES14, E14, E17, CT1, CT5)
- District Boundary
- Inset Map Boundaries

08

07

06

05

04

03

0 25 50 100 150 Meters



© Crown copyright and database rights 2014
Ordnance Survey 100019275.

53 20⁰⁰

21

22

23

24

25

26

27

28

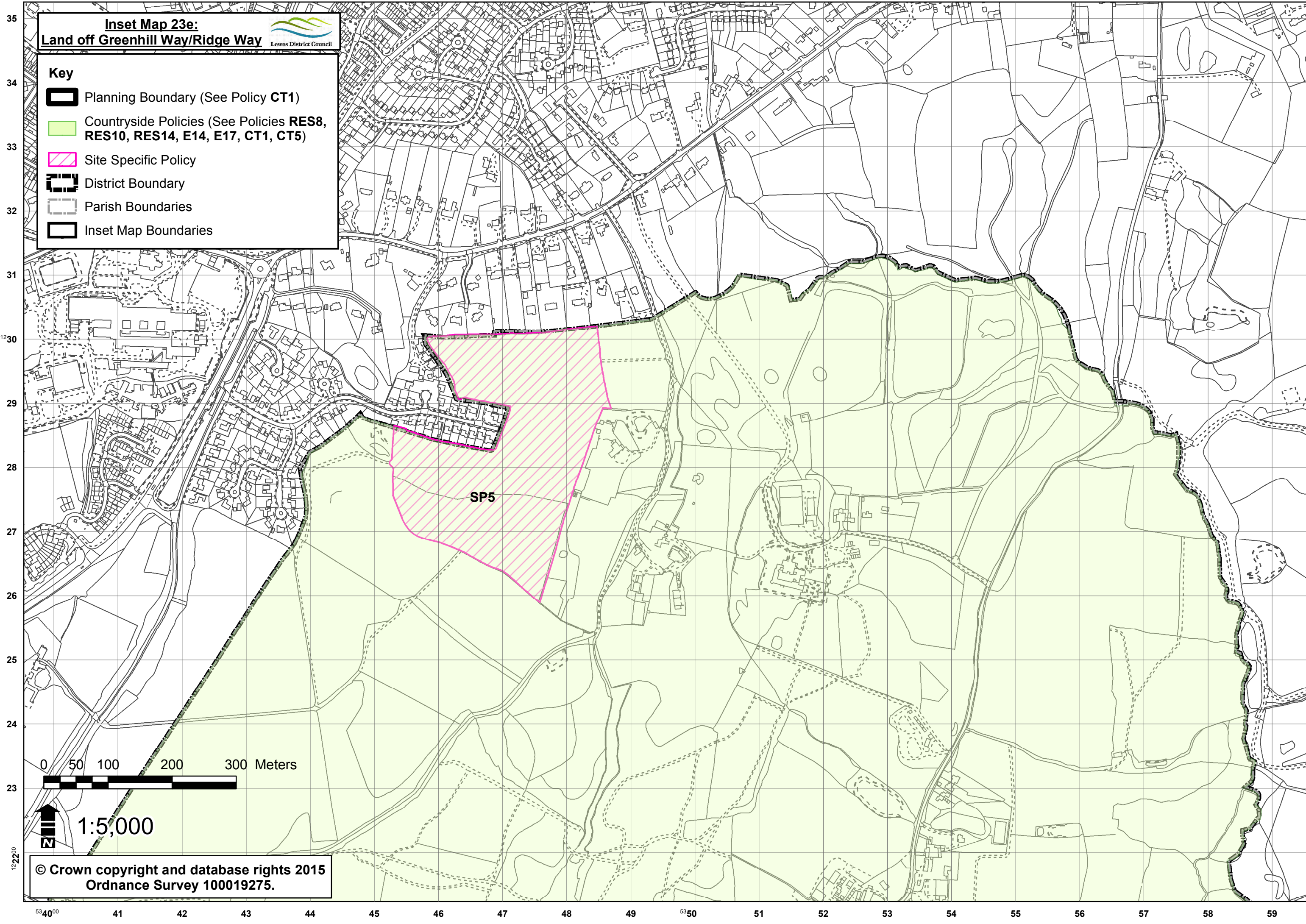
29

Inset Map 23e:
Land off Greenhill Way/Ridge Way



Key

- Planning Boundary (See Policy CT1)
- Countryside Policies (See Policies RES8, RES10, RES14, E14, E17, CT1, CT5)
- Site Specific Policy
- District Boundary
- Parish Boundaries
- Inset Map Boundaries



0 50 100 200 300 Meters

1:5,000

© Crown copyright and database rights 2015
Ordnance Survey 100019275.

53 40 00 41 42 43 44 45 46 47 48 49 53 50 51 52 53 54 55 56 57 58 59